

# Internet access redundancy

- **When things go wrong, GlobalConnect takes action!**
- **Single line breakdowns are handled automatically.**  
**Failover is without manual network reconfiguration.**
- **Possibility of handling more than one active Internet connection.**
- **We handle all or parts of operations. It is up to you!**
- **Possibility of having your own individual solution, e.g. with a route table or connection to multiple locations.**

## Secure and stable solution

Today, the Internet is the most widely used form of communication. In tandem with the increasing needs to be online at all times, demands for a secure and stable Internet solution also increase. Put simply, we expect always to be able to access our business systems, including WEB servers, e-mail systems, telephone calls, video conferences and much more.

## 99,99% Uptime

Our network uptime is 99.99%. One reason is that we have taken a number of measures to protect your Internet access. But we cannot take precautions against everything. Take, for example, cable breakdowns as a result of the cable being cut during excavation work, fire or water damage in that part of the building where your Internet connection enters the building. Protecting yourself against that can be difficult.

## 2 connections

This being the case, many choose to have two or more Internet providers, expecting a higher level of protection. But if you and your systems need to be online at all times, redundancy is the only correct solution. Our redundancy offers you two physical connections into the building, which are entirely separate and at opposite ends of the building.

## We use BGP

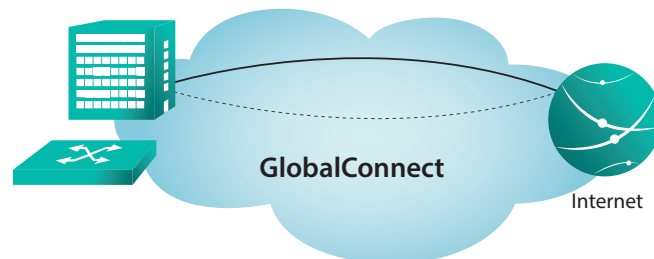
GlobalConnect uses the BGP protocol to establish redundant Internet connections. BGP is short for Border Gateway Protocol – an Internet routing protocol. It looks up in an IP network table or prefixes for determining network accessibility in autonomous systems (AS) on the Internet.

Networks using BGP routing must have a unique AS number. An AS number is unique and not least a condition for achieving redundancy in networks using two routers. For instance, this is a must when you choose a redundant Internet solution from us where you receive dual CPE equipment. Read more about our redundancy forms on the following page.

# Internet redundancy forms

## Network redundancy

IP access provided via a single router at the customer. With dual digging and alternative feed end-to-end through the network to the IP backbone. The Internet connection is thus protected against being cut during excavation work, etc.

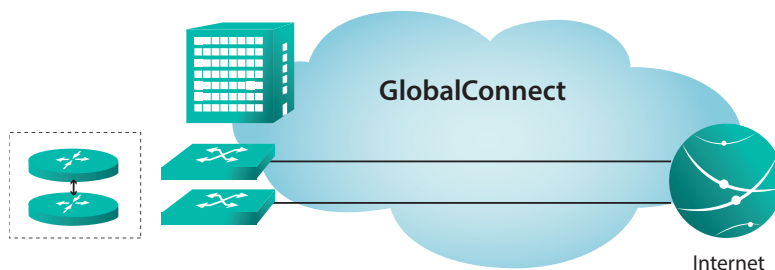


## Full diversity (Managed BGP)

IP access provided via dual digging and dual CPE at the customer's address(es).

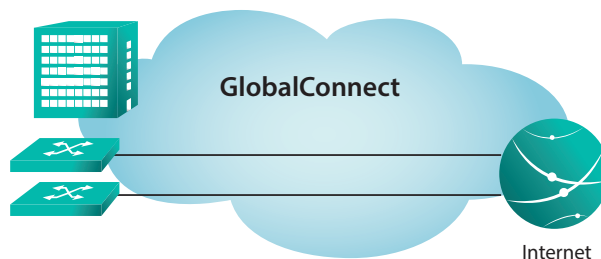
Fully separated feed to the IP backbone at two different feed points. The solution counteracts all combinations of equipment and transmission line failures.

If the solution is provided to two different physical customer addresses, two redundant transmission lines between the two BGP routers must also be provided. The installation and operation of the solution are handled by GlobalConnect.



## Full diversity (Unmanaged BGP)

IP access provided via dual digging, dual CPE and dual feed in the backbone. This form of redundancy requires the business to have one or two routers configuring with BGP routing alone.



## 100% Quality of service

With other providers, customers often have to share the same Internet resources. We do not use such methods. We only use one quality level – 100%. We can therefore guarantee no overbooking between your address and the Internet backbone. That is Quality of Service.